

# Stream Team

QUARTERLY NEWSLETTER • SPRING 2009



## Stormwater Runoff: The Lawn & Garden Connection

Signs of spring are emerging all around us, and many of us are looking forward to working in our lawns and gardens. Before you get your hands dirty, stop and look at the soil in which your grass and plants are growing. Did you know that there are over four billion micro-organisms in a teaspoon of healthy soil? Together, these organisms bind soil particles, break down leaves and other plant material, gather nutrients and water for plant roots and create spaces in the soil for air and water.

### Soil Controls Runoff Naturally

In addition to providing air, water and nutrients for plants, healthy soil acts as a natural stormwater runoff control. Healthy soil:

- soaks up rainwater, thereby reducing runoff
- stores and releases water as needed for plants
- traps pollutants like oil, metals and pesticides
- filters and purifies the air and water that percolate through it
- supplies valuable nutrients and antioxidants to plants

Healthy soil performs these functions, but soil that has been removed, compacted, exposed or paved over no longer functions properly. This creates problems with stormwater runoff and erosion. Enhancing the quality of poor soil improves water quality and creates a healthier environment.

### Enhancing Soil Quality

In nature, organic materials decompose to feed soil and make it healthy. You can imitate nature in your own yard by adding compost to lawn and garden soils. Compost is a natural organic material that is produced when kitchen waste, leaves, plant residue, grass clippings and other yard waste break down over time. You can make your own compost or buy bagged compost or worm castings.

To learn more about home composting, visit:  
[www.co.thurston.wa.us/www/Recycling\\_and\\_Disposal/Recycle/Composting/Compost\\_home.htm](http://www.co.thurston.wa.us/www/Recycling_and_Disposal/Recycle/Composting/Compost_home.htm)

### How & Where to Use Compost

**Topdress lawns:** Spread a thin layer of compost (about a half inch) on your lawn during the spring or fall. This technique works best if you first aerate the lawn.

**Plant gardens:** Mix compost into soil to a 10- to 12-inch depth before each year's planting.

**Mulch around plants:** Place a several-inch-thick layer of mulch around plants to limit weed growth, reduce evaporation, keep soil temperature even and reduce soil erosion.

(continued on page 2)

### IN THIS ISSUE

- 1 Stormwater Runoff:  
The Lawn & Garden  
Connection
- 2 How Rain Gardens  
Protect Streams
- 3 Spring Calendar
- 4 New Website  
P.S. I Love You
- 5 Fruiting Native  
Plants Workshop  
Earth Day  
Plant Holding Beds  
Agreement
- 6 Volunteer &  
Staff News
- 8 Naturescaping  
Workshop



OLYMPIA • LACEY • TUMWATER  
THURSTON COUNTY

## Stormwater (cont. from page 1)

### How Much Compost?

Below are some general guidelines to follow when adding compost. Amounts are for every 100 square feet of planting area/lawn:

**New Lawns:** Mix compost into the soil at least 6 to 8 inches deep as follows:

Clay soils = 1-inch layer of compost

use 8 cubic feet per every 100 sq. ft. of lawn

Sandy soils = 1½-inch layer of compost

use 13 cubic feet per every 100 sq. ft. of lawn

**Established Lawns:** Spread a 1-inch layer and rake in; grass should be standing up, not bent over or buried, when finished. Mixing grass seed with compost encourages new growth.

**New and established gardens:** Mix compost to a 10- to 12-inch depth as follows:

Clay soils = 2-inch layer of compost

use 16 cubic feet per every 100 sq. ft.

Sandy soils = 4-inch layer of compost

use 24 cubic feet per every 100 sq. ft.

### Healthier Soil = Healthier Plants

Improving soil health by adding compost will help make your lawns and plants healthier. Healthy soil is full of beneficial bacteria, fungi and other organisms that work together to keep disease and pests under control and protect the health of plants. Using chemicals in gardens and lawns can damage the soil's natural defense system by killing off good organisms and bacteria along with the bad. This may lead you to think that more chemicals are needed when, in fact, if you focus on building healthier soil, your lawns and gardens will become naturally resilient to diseases and pests.

So, this spring, as you get ready to get your hands dirty, give your lawns and gardens a boost by adding compost to the soil. Your plants will thank you by growing healthy and vibrant!



**Beautiful New Rain Gardens Poster Available!** This new poster, by northwest artist John Pitcher, shows how a rain garden can be incorporated into landscapes.

## Rain Gardens Help Protect Our Streams

Join us for a free, hands-on workshop where you'll get all the details you need to design and install a beautiful rain garden that will manage your home's drainage while protecting our local waterways.

Participants will receive a free copy of the brand new, full color rain garden poster from Good Nature Publishing as well as the fabulous WSU publication, Rain Garden Handbook for Western Washington Homeowners.

### Rain Garden Workshop:

**Tumwater Thu. Apr. 16 • 6:30-8:45pm**

Workshops are free, but advanced registration is required. For more information, workshop locations, and to register, contact WSU Thurston County Extension Native Plant Salvage Project at 360-754-3588 ext. 109 or [nativeplantsalvage@gmail.com](mailto:nativeplantsalvage@gmail.com)

Co-sponsored by Stream Team and WSU Native Plant Salvage Project.



Installing a rain garden helps reduce stormwater runoff while adding beauty to your landscape.



## April

**Thu. Apr. 16 • 6:30-9:30pm**

### **Tumwater Rain Garden Workshop**

Location to be announced  
Registration required  
Contact 360-754-3588 x109  
or nativeplantsalvage@gmail.com

**Sat. Apr. 18 • 10am-Noon**

### **Black Lake Meadows Planting Project**

RW Johnson Blvd. between  
Mottman Rd. & 21st Av. SW.  
Enter at railroad crossing.  
Contact Patricia @ 360-570-5841  
or ppyle@ci.olympia.wa.us

**Sat. Apr. 18 • 2-4pm**

### **Salmon Steward Training: Spring Migration and Stream Habitat**

McLane Creek Nature Trail  
Contact Patricia @ 360-570-5841  
or ppyle@ci.olympia.wa.us

**Sat. Apr. 25 • 10-12pm**

### **Stream Team Earth Day Event**

Percival Creek Restoration Project  
Sapp Rd. behind Streamland Estates  
Contact Debbie @ 360-754-4148  
or dmsmith@ci.tumwater.wa.us

## OTHER LOCAL EVENTS:

**Sat. Apr. 25 • 4:30pm**

### **Procession of the Species**

Downtown Olympia  
For info, visit [www.procession.org](http://www.procession.org)

**Sat. May 2 • 8am-3pm**

### **Thurston County Fair's First Annual Community Garage Sale & Reuse Fair**

Thurston County Fairgrounds  
To reserve booth space or for info,  
contact 360-786-5453 or visit  
[www.thurston.wa.us/fair](http://www.thurston.wa.us/fair)

## May

**Fri. May 8 & Sat. May 9**

### **Youth Outdoor Expo**

Thurston County Fairgrounds  
Volunteers needed  
Contact Debbie @ 360-754-4148  
or dmsmith@ci.tumwater.wa.us

**Sat. May 16 - Sun. May 17**

### **Lacey Fun Fair**

Volunteers needed  
Contact Erin @ 360-438-2687  
or ekeith@ci.lacey.wa.us

**Sun. May 17 • 1-3pm**

### **McLane Creek Nature Trail Work Party**

Meet at trailhead by lower parking lot  
Contact Ann Marie @ 360-754-3355 x6857  
or finanam@co.thurston.wa.us

**Sat. May 30 • 10am-4pm**

### **Naturescaping for Water & Wildlife Field Course**

Olympia location to be announced  
Registration required  
Contact 360-754-3588 x109  
or nativeplantsalvage@gmail.com

## June

**Wed. Jun. 3 • 6-8pm**

### **Fruiting Native Plants for Beginners Part 1: Classroom Workshop**

Lacey City Hall  
Registration required  
Contact 360-754-3588 x136  
or kbauman@thurstoncd.com

**Sat. Jun. 6 • 10am-Noon**

### **Fruiting Native Plants for Beginners Part 2: Field Class**

Meet at Lacey City Hall  
Registration required  
Contact 360-754-3588 x136  
or kbauman@thurstoncd.com

**Sat. Jun. 13 • 10am-3:30pm**

### **Meet the Trees of Washington Field Course**

Location to be announced  
Registration required  
Contact 360-754-3588 x109  
or nativeplantsalvage@gmail.com

**Th. Jun. 18 • 6-8pm**

### **Macroinvertebrate Monitoring Training**

2404 Heritage Ct. SW Olympia  
Registration required  
Contact Ann Marie @ 360-754-3355 x6857  
or finanam@co.thurston.wa.us

**Jun. 21-27**

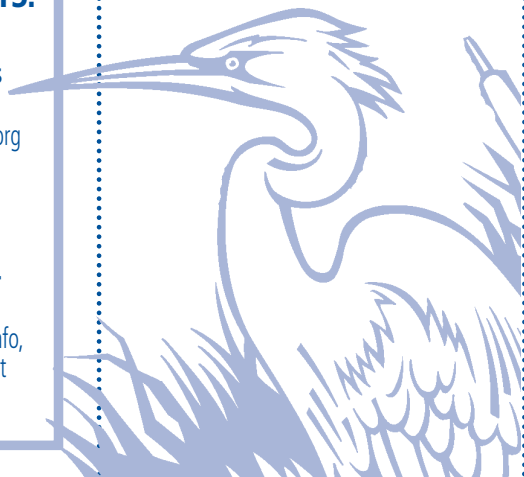
### **Natural Resources Youth Camp Cispus Learning Center (Ages 12-17)**

Contact Debbie @ 360-754-4148  
or [www.nryc.org](http://www.nryc.org)

**Wed. Jun. 24 • 4:30pm-dusk**

### **McLane Creek Nature Trail Work Party**

Pizza will be served at 6:30pm  
Meet at trailhead by lower parking lot  
Contact Ann Marie @  
360-754-3355, 360-754-6857 or  
finanam@co.thurston.wa.us



**PLEASE NOTE:** Citizens requiring special accommodations should call the Event Coordinator at least one week prior to the event.

# New Website Offers One-Stop Shopping

Have you ever had difficulty plowing through the Lacey, Olympia, Tumwater or Thurston County website trying to find information about Stream Team? Buried among a myriad of other topics, emerging issues and other jurisdictional business, it has often been hard for Stream Team volunteers to find us on the web.

Well, no longer! Visit [www.streamteam.info/](http://www.streamteam.info/) for easy access to all things Stream Team. Currently up and running, though still undergoing construction, our new website will offer easy "one stop shopping". Look for information on upcoming events, classes and programs like macroinvertebrate monitoring and Salmon Stewards. Can't find the newest issue of the Stream Team newsletter? No problem. Just visit the website!

Contacting your local program coordinator via email will now be just a click away. The Stream Team website for each jurisdiction is also available at the top of the main page. If you have any suggestions for us as we build the website, please let us know. We will be hard at work making this a useful and up-to-date electronic resource.



Cub Scouts mark storm drains with important message: No Dumping: Flows to Waterways.

## Time for Storm Drain Marking Season!

Storm drain marking season is coming up. If you are interested in helping to mark local storm drains with a message reminding people not to dump potential pollutants down storm drains, contact your local Stream Team Coordinator listed on the back of this newsletter.



P.S. I Love You participants Raven Connolly (as Sammy), Amelia Thompson and Freya Jamison (as Scoopy Doo).

## P.S. I Love You! Valentine's Day Party

P.S. I Love You is about you and Puget Sound. It's a love story. A story of how you and Puget Sound live day to day in this place, the beautiful Pacific Northwest. As in any relationship, it's important to reflect on whether your daily activities help, harm or have no impact on the health of Puget Sound and all the animals that depend on the Sound. P.S. I Love You was launched by Stream Team at a Valentine's Day party. Twelve local groups brought activities and information on how we can live more "soundly" with Puget Sound. The three-hour party was attended by nearly 200 people.

Participants visited educational table stations with a stamp card. Table activities included a native plant game and information provided by WSU Native Plant Salvage Project and Tall Tree Youth Stewardship Project; how to test soils by Thurston Conservation District; how to read the label on fertilizers and calculate the proper application rate by Thurston County Environmental Health; bicycle helmets and bike tune-ups by City of Olympia Bicycle and Pedestrian Program; bus trip planning by Intercity Transit; how to make chemical-free lip balm by Thurston County Environmental Health; how to make a safe, fragrant and effective home cleaners by Posies Products; how to make an herbal healing balm by HerbAlchemy; how and why to pick up pet waste with Scoopy Doo and Pacific Shellfish Institute; Puget Sound lobby day photos with People for Puget Sound; pet population control with Thurston County Humane Society; South Sound educational materials with South Sound

Estuary Association, and pot up and take a native plant home from Stream Team. Refreshments and salmon-themed craft activities were also provided by Stream Team.

After visiting all the tables, participants were photographed with their P.S. I Love You Valentine standing in front of a Mt. Rainier and Puget Sound background scene.



Thurston Co. Stream Team Coordinator, Ann Marie Finan shows off the new Stream Team tote bag.

## New P.S. I Love You Tote Bag

Get this new, limited edition P.S. I Love You tote bag by participating in four types of Stream Team action and education activities. This is in addition to the regular kudo card awards! The tote is made of organic heavy cotton with an embroidered P.S. I Love You logo, designed by Nikki McClure, on one side and the Stream Team logo on the other side.

To earn a tote bag, volunteer to be a Salmon Steward in late summer/early fall, monitor streams for bugs in late summer, plant trees in spring or fall, and attend a Stream Team-sponsored workshop or class. It's that easy!

## Fruiting Native Plants for Beginners Workshop

**Part 1: Classroom Workshop**  
Wed. Jun. 3 • 6-8pm

**Part 2: Field Class**  
Sat. Jun. 6 • 10am-noon

Lacey City Hall

### FREE! REGISTRATION REQUIRED

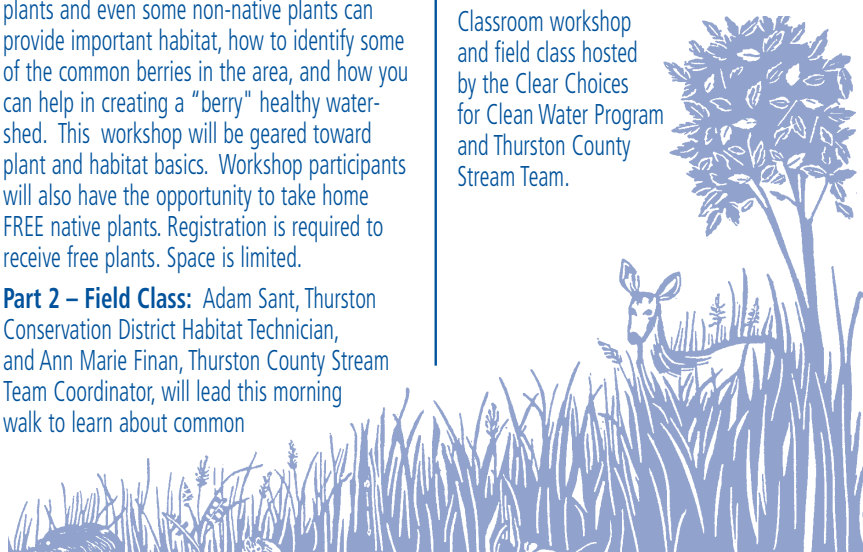
**Part 1 – Workshop:** Back by popular demand! Come learn about a few well known- and not so well known- berries that grow in the Pacific Northwest. We'll discuss how fruiting native plants and even some non-native plants can provide important habitat, how to identify some of the common berries in the area, and how you can help in creating a "berry" healthy watershed. This workshop will be geared toward plant and habitat basics. Workshop participants will also have the opportunity to take home FREE native plants. Registration is required to receive free plants. Space is limited.

**Part 2 – Field Class:** Adam Sant, Thurston Conservation District Habitat Technician, and Ann Marie Finan, Thurston County Stream Team Coordinator, will lead this morning walk to learn about common

fruiting native plants and valuable habitat characteristics. Participants will learn about plant identification features, habitat requirements for different plants and important techniques for restoration. Please wear comfortable and weather-appropriate clothing and shoes. Transportation to the trail from the meeting site will be provided. Space is limited.

Registration is required for Parts 1 and 2. For information or to register, contact 360-754-3588 x136 or kbauman@thurstoncd.com

Classroom workshop and field class hosted by the Clear Choices for Clean Water Program and Thurston County Stream Team.



## Plant Holding Bed Agreement On Its Way

Each year, Stream Team volunteers plant many hundreds of native trees and shrubs at habitat enhancement sites throughout Lacey, Olympia, Tumwater and Thurston County. Stream Team procures these plants from many sources including salvaged plants from WSU Native Plant Salvage Project, stock purchased from local nurseries and donations.

Sometimes these plants are of the bare-root variety, small in size, and in need of immediate planting. Bare-root plants are affordable and effective if planted right away and protected from being eaten by small, gnawing rodents. However, experience shows that when these bare-root plants are potted in one or two gallon containers and allowed to grow for 6 months to a year, they become much more robust and have a higher survival rate. With more highly developed root structures and larger stems and leaf structures, these container plants are easier to

plant and contribute to a significantly more successful restoration project. Buying bare-root plants and potting them up with the help of our wonderful volunteers saves Stream Team a lot of money over buying more mature plants.

As this edition of the newsletter goes to press, Stream Team, Thurston Conservation District and WSU Native Plant Salvage Project are in the final stages of reaching an interlocal agreement with the Washington Department of Transportation to provide access to a plant holding bed area in Mottman Park. This facility will give Stream Team space and infrastructure so that it can tend and nurture plant stock for future streamside and upland planting projects. Once the agreement is finalized, Stream Team and its community partners will install necessary irrigation equipment and shade cover to keep plants healthy, happy and growing.

## Earth Day 2009: Ten Easy Ways You Can Help Prevent Stormwater Pollution

Earth Day is Wednesday, April 22. Here in Thurston County, we are surrounded by the beauty of many rivers, lakes, wetlands and Puget Sound. The biggest threat to the health of these water resources is non-point source pollution, pollution that is picked up by stormwater runoff flowing over hard surfaces. Stormwater picks up pollutants from pesticides, fertilizers, motor oil, pet waste, paints, solvents and other pollutants and carries those pollutants to storm drains. The stormwater flows untreated, or sometimes with minimal treatment, into our creeks, streams, lakes and Puget Sound. On Earth Day, and every day, here are 10 easy things you can do to help prevent stormwater pollution:

- Fix oil leaks in cars and recycle all vehicle fluids at designated recycling centers.
- Plant native trees and shrubs and preserve native vegetation already on-site.
- Take cars to car washes that use recycled water or wash cars on lawns or gravel using non-toxic, low-phosphate soap.
- Use pesticides and herbicides sparingly or try non-toxic alternatives.
- Use an organic or slow-release fertilizer rather than "weed and feed" products.
- Pick up pet waste, bag it, and put it in the trash.
- Create a rain garden to capture stormwater runoff from rooftops and driveways.
- Don't pour anything down a storm drain. Safely dispose of paints, solvents, motor oil and other toxic household products.
- Aerate your lawn and topdress with compost to strengthen grass roots.
- Join Stream Team and help restore habitat associated with streams, wetlands and Puget Sound. As a Stream Team member you can volunteer a little or a lot of your time – any contribution is greatly valued!



# Volunteer News

## Volunteers Pitch In to Help Tumwater

A band of enthusiastic Stream Team volunteers put their efforts into an unusual Stream Team event on February 28. The City of Tumwater installed a new shed to house the numerous tools and equipment used by the Stream Team program, and the items to be stored there were in dire need of cleaning and organizing. The previous storage structure caved in during our record December snow storm.

The group banded together under the guidance of Stream Team volunteer, Steve Parks to sort out what could be salvaged. Amazingly, almost everything survived intact. The volunteers cleaned and oiled the shovels, rakes, loppers and clippers. The small hand tools were placed on hooks on pegboard lining the walls of the new structure. Volunteer Jim Shoopman built a rack for the shovels and rakes.

All of the other equipment, including the Stream Team education tent, tarps, gloves, storm drain marking materials, macroinvertebrate monitoring equipment and our water conservation items were carefully cleaned and organized into marked plastic storage buckets and bins.

In addition to Steve and Jim, volunteers included Betsy and Richard Brandt-Kreutz, Anthony Cervantes, Janet Franks, Laurie MacInnes, Judy Oliver, Lhisa Reish, Cheryl Stephen and Rodney Tennison. Tumwater Stream Team extends deep gratitude to these outstanding volunteers!



Students weed plantings at Percival Creek.



Volunteers pose after a job well done at Percival Creek.

## Hard-Working Volunteers Make Revegetation Projects a Success

Percival Creek in Tumwater received some tender loving care on January 17 in the form of twenty-eight hardy volunteers. Under the leadership of Don Everleth, Steve Parks and Matt Samson, the group of high school volunteers planted Pacific willow and red-osier dogwood stakes along the creek, hand-pulled weeds from around previously planted native trees and shrubs, and cut back large amounts of persistent Himalayan blackberry.

Volunteers came out to the Percival Creek site once again on March 14 to plant trees. These hardy volunteers worked in the pouring rain to plant trees and shrubs along the bank of the creek. Thanks to Kathy Callison for donating the plant materials. With the help of our fantastic volunteers, the planting will continue!

On Saturday, February 21, eager Stream Team volunteers helped to plant 100 native trees and shrubs along Woodland Creek near Draham Rd. Willow, twinberry, snowberry, coralberry and red-flowering currant were planted to help restore riparian vegetation along the streambank and reduce streambank erosion. Thanks to all of the volunteers who did such a great job planting!

## More Trees, Please: Volunteers Help Us Create Ribbons of Green!

Black Lake Meadows is a 42-acre stormwater facility on Olympia's west side that receives stormwater runoff from 800 acres, including Capital High School, Westfield Mall and surrounding development. The water moves through a series of ponds and wetlands before entering Black Lake Ditch, Percival Creek and Capitol Lake. A ditch runs through the property. The ditch was created in the 1920's to drain the land for agriculture and is important habitat for residential and migratory wildlife.

Recently, the loop trail around the Black Lake Meadows wetland stormwater pond was completed by City of Olympia staff, Marcus Goodman. The loop trail provides a great seasonal wildlife and birding viewing experience. The trail "loops" in-between the wetland and the ditch.

On March 28, Stream Team and community volunteers planted trees and shrubs next to the ditch. In addition to the planting, volunteers learned about frogs and salamanders from Bonnie Blessing, birds from Anne Mills, coordinator of Thurston Conservation District's South Sound GREEN program, and fish and the large woody debris installed in the ditch from Frank Staller, from Wild Fish Conservancy.

On April 18, the Olympia Action Network and Stream Team volunteers will continue to plant more trees and shrubs along Black Lake Ditch. This planting is free and open to the public. If you missed the March 28 planting, please come on April 18 from 10am-Noon. Shovels, plants and refreshments will be provided!

.....

*When we tug at  
a single thing in nature,  
we find it attached  
to the rest of the world.*

— John Muir

# Staff News

## Goodbye to Tim

Stream Team bids a fond farewell to Tim Wilson. Tim has left the Stream Team Coordinator's position with City of Lacey to take the position of Water Resources Specialist with City of Tumwater.

Tim brought a great sense of humor and commitment to his work with Stream Team. He will especially be remembered for his hard work on Lacey's habitat enhancement project along Woodland Creek at the Lacey Community Center. He kept the thirsty plants happy during hot summer months with his favorite water tank truck. And any time Stream Team needed a trailer towed, regardless of time or weather, Tim was always there! We hope to see him around at future Stream Team events. Thanks, Tim!



## New Lacey Stream Team Coordinator Welcomed

Erin Keith was recently hired as the new Water Resources Specialist at the City of Lacey. When she isn't getting her feet wet and her

hands dirty as the newest Stream Team Coordinator, she'll be working on ways to spread messages about stormwater and water conservation.

With a BS degree in environmental studies from the Evergreen State College, Erin served two years as an AmeriCorps member with the Washington Conservation Corps (WCC) at Washington State Parks. The opportunities that followed included reviewing State Parks' Puget Sound Initiative Projects and working to implement low impact development and other sustainable practices in state parks along Puget Sound. Last year, she went back to the WCC to serve as a Program Coordinator. Erin led the outreach, training and individual placement programs for WCC at the Dept. of Ecology.

Erin looks forward to meeting the volunteers that make the Thurston County area Stream Teams the dynamic group of individuals that she has heard so much about!



P.S. I Love You participants make eco-friendly cleaning products.

## P.S. I Love You Volunteers

**Thank you to the following volunteers who donated their time to help plan, set-up, staff stations and clean-up. We couldn't have done it without you!**

Liane Bascou, Stephanie Bishop, Liam Connolly, Raven Connolly, Beth Harlow, Briana Jackson, Freya Jamison, Elisa Johnson, Joan Machliss, Natalie Pyrooz, Bernrd Pielmier, Natalie Pyrooz, Lhisa Reish, Marilyn Smith, Warren Smith, Rodney Tennison, Amelia Thompson and Michael Thornton.

**Thank you to all of the local businesses and organizations that donated items to our P.S. I Love You raffle!**

Lloyd's Transmission: Oil Change Gift Certificate

City of Olympia: "Be Nice to Budd" t-shirts

Olympia Food Co-op: \$50 worth of items

Olympia's Sustainable Community Roundtable: "Money Matters" Coupon Book

Shur Kleen Car Wash: car wash vouchers

Stream Team: t-shirts, travel mugs, sweatshirts, hats and posters

Thurston County Environmental Health: Natural Products Home Cleaning Kit

Thurston County Solid Waste: Biostack Compost Bin

## New! Spring Salmon Steward Training

**Sat. Apr. 18 • 2-4pm • Salmon Steward Walk & Talk  
Spring Migration and Stream Habitat  
McLane Creek Nature Trail**

This is the first in a series of topics on local salmon runs. This walk-and-talk is open to everyone, but is especially for people interested in becoming a fall Salmon Steward. Jamie Glasgow, Director of Science and Research with Wild Fish Conservancy will talk about salmon habitat, stream morphology and the wild juvenile chum salmon out-migrating from fresh water to salt water. Using dip nets, we also hope to find a few juvenile cutthroat or coho! For more information, contact Patricia @ 360-570-5841 or ppyle@ci.olympia.wa.us



**Naturescaping for Water and Wildlife  
Field Class: Sat. May 30 • 10am-4pm  
Olympia location to be announced  
FREE! REGISTRATION REQUIRED**

How can you resist free hands-on landscaping advice from two pros with a passion for protecting water and wildlife habitat? Join landscape designer, Linda Andrews and Native Plant Salvage Project's Erica Guttman for a full day of learning about sustainable design and creation, then travel by bus to local private water-wise landscapes.

**Learn:**

- How to get started on a landscape plan
- Techniques that will save you time and money
- How to attract birds, butterflies, beneficial insects and amphibians to your garden
- Planting for four-season interest
- Water-wise ideas for outdoor living spaces
- Managing drainage on site
- Dealing with slopes & trouble spots

A morning classroom session will be followed by site visits. Bus transportation will be provided. Registration is required as space is limited. For details and registration, contact 360-754-3588 x109 or email [nativeplantsalvage@gmail.com](mailto:nativeplantsalvage@gmail.com)

**STREAM TEAM MISSION:** To protect and enhance the water resources, associated habitats and wildlife of north Thurston County through citizen education and action.

Stream Team is funded by Storm and Surface Water Utility revenues.

**STREAM TEAM INQUIRIES:**

**In Lacey:** City of Lacey Water Resources Program

P.O. Box 3400, Lacey, WA 98509-3400

Attn: Erin Keith – Tel: 360-438-2687 / TDD: 1-800-833-6388

**In Olympia:** City of Olympia Water Resources Program

P.O. Box 1967, Olympia, WA 98507

Attn: Patricia Pyle – Tel: (360) 570-5841 / TTY: 360-753-8270

**In Tumwater:** City of Tumwater Public Works Water Resources Program

555 Israel Road SW, Tumwater, WA 98501

Attn: Debbie Smith – Tel: 360-754-4148 / TDD: 1-800-833-6388

**In Thurston County:** Thurston County Water Resources Program

929 Lakeridge Dr. SW, Olympia, WA 98502

Attn: Chris Maun – Tel: 360-754-3355 EXT 6377 / TDD: 360-754-2933

**NEWSLETTER CONTRIBUTORS:**

Erin Keith, Lacey Stream Team; Patricia Pyle, City of Olympia Stream Team; Debbie Smith, Tumwater Stream Team; Chris Maun & Ann Marie Finan, Thurston County Stream Team

**DESIGN & LAYOUT:** Barbara McConkey, InForm Design

PLEASE NOTE: Citizens requiring special accommodations should call one of the coordinators listed above at least one week prior to an event.



929 Lakeridge Dr. SW • Olympia WA 98502

PRSRT STD  
US POSTAGE  
**PAID**  
LACEY, WA  
PERMIT NO. 6