

# Stream Team News

**FREE**

OLYMPIA • LACEY • TUMWATER • THURSTON COUNTY

EDUCATE • PROTECT • RESTORE



## Inside...

The Life of Dragonflies with Dennis Paulson | 2  
Be a Salmon Steward | 3  
Come On Out & Get Your Feet Wet!  
Learn to Collect Stream Bug Samples | 4  
Bat Walk | 4  
The Time Is Right for Marking Storm Drains | 4

Waterwise Tips for a Healthy Lawn | 5  
Local Lakes and Beaches:  
Small Actions Add Up to Big Impacts | 6-7  
Featured Creature: European Green Crab | 8  
Invasivore Dining | 8  
Conserving Water Conserves Your Cash | 9

**SUMMER EDITION**  
June-July-August 2016

Featured Waterbody: Deep Lake | 10  
Kids' Corner | 10  
Calendar of Events | 11  
Marine Creature Mondays | 12

# The *Life of Dragonflies* with Dennis Paulson

## THE LIFE OF DRAGONFLIES WITH DENNIS PAULSON .....

### LECTURE:

- Saturday, July 9
- 10 – 11:30 a.m.
- LOTT WET Science Center,  
500 Adams St NE, Olympia

### FIELD TRIP:

- To follow at a local wetland



*Did You Know?*

There are  
**348 species**

of dragonflies and  
damselflies (Odonata)  
known to occur  
in the western United  
States and Canada.

Dragonflies  
can move

***all four wings***

independently in flight,  
and their wings not only  
move up and down but can  
also be rotated on their  
own axes.

Some of our  
local dragonflies  
***migrate south***  
with many migrating  
hawk species.

All  
dragonflies, both  
the adults and the  
larval form are  
***predators.***

This is a workshop you will not want to miss! To register for this workshop, visit [www.streamteam.info](http://www.streamteam.info) and click on "Register". For more information, contact Michelle at [mstevie@ci.olympia.wa.us](mailto:mstevie@ci.olympia.wa.us)



**ON THE COVER:** Photo by Michele Burton Photographer.

## STREAM TEAM MISSION

To protect and enhance the water resources and associated habitats and wildlife in Thurston County through citizen action and education.

*Stream Team is funded and jointly managed by the stormwater utilities of the Cities of Lacey, Olympia and Tumwater and Thurston County. Stream Team programs meet the requirements for the National Pollutant Discharge Elimination System (NPDES) permit for stormwater.*

### SPECIAL NEEDS?

Citizens requiring special accommodations can call one of the coordinators listed at least one week prior to an event to make special arrangements.

### FIND US ON FACEBOOK:



ThurstonStreamTeam

### NEWSLETTER CONTRIBUTORS:

Paige Anderson, Kim Benedict, Chelsey Cook, Emmerly Ledin, Chris Maun, Susan McCleary, Ann Marie Pearce, Debbie Smith, Michelle Stevie, and Michele Burton Photographer.



## STREAM TEAM INQUIRIES

360-438-2672 or [streamteam@ci.lacey.wa.us](mailto:streamteam@ci.lacey.wa.us)

### IN LACEY:

City of Lacey Water Resources Program  
420 College St. SE, Lacey, WA 98503

**Attn: Kim Benedict**

Tel: 360-438-2687

TDD: 1-800-833-6388

[kbenedic@ci.lacey.wa.us](mailto:kbenedic@ci.lacey.wa.us)

### IN OLYMPIA:

City of Olympia Water Resources Program  
P.O. Box 1967, Olympia, WA 98507-1967

**Attn: Michelle Stevie**

[mstevie@ci.olympia.wa.us](mailto:mstevie@ci.olympia.wa.us)

### IN TUMWATER:

City of Tumwater Water Resources Program  
555 Israel Road SW, Tumwater, WA 98501

**Attn: Debbie Smith**

Tel: 360-754-4148 TDD: 1-800-833-6388

[dmsmith@ci.tumwater.wa.us](mailto:dmsmith@ci.tumwater.wa.us)

### IN THURSTON COUNTY:

Thurston County Water Resources Program  
929 Lakeridge Dr. SW, Olympia, WA 98502

**Attn: Chris Maun or Ann Marie Pearce**

Tel: 360-754-3355 EXT 6377

TDD: 360-754-2933

[maunc@co.thurston.wa.us](mailto:maunc@co.thurston.wa.us)

[pearcea@co.thurston.wa.us](mailto:pearcea@co.thurston.wa.us)

**DESIGN & LAYOUT:** Azure Summers Graphic Design, [design@azuresgd.com](mailto:design@azuresgd.com)



# Be a Salmon Steward!

**Tyee, Blackmouth, Silver, Pink, Red, Humpy, and King...**

**what do these names all have in common? *Salmon!***

Each year, adult salmon make their journey back to the stream in which they hatched or imprinted to spawn. Some species travel a short distance, while others swim thousands of miles to complete their life cycle. Imagine learning about this Northwest icon and being able to share the excitement of their return with others. Interested? Join Stream Team at our upcoming trainings and become a Salmon Steward!

At the trainings, Salmon Stewards learn about the Deschutes River hatchery Chinook and the wild South Sound chum salmon. Salmon Stewards staff three popular salmon viewing locations:

<b>Late August / September</b>	▶ 5th Avenue Dam
<b>Mid September / Early October</b>	▶ Tumwater Falls Park
<b>November / Early December</b>	▶ McLane Creek Nature Trail off Delphi Rd SW

Each location has its own story related to the history of salmon and people in South Sound. The trainings are designed to give the information needed to be successful as a Salmon Steward.



## REQUIRED TRAINING:

All new Salmon Steward volunteers must attend the three Basic Trainings and at least one of the field sessions. To register, visit [www.streamteam.info](http://www.streamteam.info) and click on "Register". For more information, contact Michelle at [mstevie@ci.olympia.wa.us](mailto:mstevie@ci.olympia.wa.us)

## Salmon Stewards Training Dates:

Date	Time	Location	Content
<b>Tues., July 26</b>	6 – 8:30 p.m.	Olympia City Hall	<b>Basic Training Pt. 1:</b> Life Cycle
<b>Wed., Aug. 10</b>	6 – 8:30 p.m.	Olympia City Hall	<b>Basic Training Pt. 2:</b> The 4 – H's:
<b>Wed., Aug. 17</b>	6 – 8:30 p.m.	Olympia City Hall	<b>Basic Training Pt. 3:</b> Harvest Management
<b>Sat., Aug. 20</b>	9 – 11 a.m.	5th Avenue Bridge Dam	Docent skills, dam operation
<b>Sat., Sept. 17</b>	10 a.m. – 1 p.m.	Tumwater Falls Park	Docent skills, hatchery operation, history walk

## McLane Creek Chum training:

For trained Salmon Stewards, once the chum are in the creek, a brief indoor training takes place in November along with the field docent training at the McLane Creek Nature Trail. Dates and times will be posted in the fall newsletter and on Stream Team's calendar at [www.streamteam.info/getinvolved/calendar/](http://www.streamteam.info/getinvolved/calendar/)





## Come On Out & *Get Your Feet Wet!*

Learn to collect stream bug samples  
in our local streams!


**Besides stream bugs being cool, why do we monitor streams for their presence?** Benthic macroinvertebrates or “stream bugs” are small aquatic organisms that live at the bottom of a stream. These critters are an essential part of the stream food web and make up a large percentage of a juvenile salmon’s diet. Because each “stream bug” has a specific life history, macroinvertebrates can be a reliable indicator of stream health. Some species are tolerant of stream pollution and habitat disturbance, while others are very intolerant of disturbances and changes in water quality.

This training will teach you how to collect stream bug samples in local streams and why they are used as indicators of stream health. The training will also cover the monitoring protocol used to gather the samples.

After the training, you can sign up to monitor at one or more sites. Volunteers will be accompanied by trained Stream Team staff at each monitoring location. Monitoring dates are scheduled for varying days of the week, to help accommodate busy schedules. Youth under the age of 14 must be accompanied by an adult. Monitoring usually takes between 2 – 5 hours per site, depending on the site and location. The monitoring window begins in late June and runs through mid-August.

*\*Please note: The McLane Creek Nature Trail is managed by the Department of Natural Resources. A Discover Pass is required for parking at this trail. A vanpool will be available for this training, or you can purchase a one-day or annual Discover Pass. For information about purchasing a pass, go to: [www.discoverpass.wa.gov](http://www.discoverpass.wa.gov)*

## COLLECT STREAM BUG SAMPLES .....

- Tuesday, June 21 
- 6 – 8 p.m.
- McLane Creek Nature Trail\*  
Delphi Road

## BAT TALK & WALK .....

- Friday, June 3 
- TALK (Registration REQUIRED):
- 7 p.m.
- Traditions Cafe
- WALK (Registration NOT Required):
- 9 p.m.
- Heritage Park



## Bat Walk

### Did you know?

The Townsend’s big-eared bat is considered rare and is on the Washington Department of Fish and Wildlife’s species of concern list. Find out why and learn more about our local bats from local bat expert Greg Falxa at a fun, fact-filled bat talk followed by an optional bat walk in Heritage Park. REGISTRATION IS REQUIRED for the bat talk, as space is limited.

Register for the bat talk at [www.streamteam.info](http://www.streamteam.info) and click on “Register”. Registration is NOT required to join the bat walk at 9 p.m. For more information, contact Michelle at [mstevie@ci.olympia.wa.us](mailto:mstevie@ci.olympia.wa.us)

## The Time Is Right for Marking *Storm Drains!*

It’s that time of the year again to remind folks to keep pollutants out of our storm drains by marking them with the message of, “No Dumping- Flows to Waterways”. Many people have no idea that our storm drains (with the exception of a small area in downtown Olympia) flow directly into streams, lakes or other surface waterbodies or into a neighborhood stormwater pond where it can infiltrate back into groundwater that supplies our drinking water.

Pollution that is carried by stormwater can harm fish, wildlife, shellfish and our drinking water. Products such as old paint, oil and soap should never be dumped down storm drains. Remember, only rainwater or snowmelt should flow into storm drains!

Want to get involved in protecting local streams and groundwater? Installing storm drain markers is a fun way to do it! Individuals, families or community groups can all install storm drain markers.

**Contact the staff listed below in the jurisdiction where you would like to mark storm drains:**

Lacey, Kim Benedict ..... 360-438-2687  
Olympia, Susan McCleary ..... 360-570-3794  
Tumwater, Debbie Smith ..... 360-754-4148  
Thurston County, Chris Maun ..... 360-754-3355 ext. 6377





# Waterwise Tips for a Healthy Lawn

**Watering wisely can save you money on your water bill and improve the quality of your lawn!**

Did you know you can conserve water by cutting your grass taller? A taller and thicker lawn retains moisture better, so you won't have to water as often. Set your mower height between 2 to 3 inches. Be sure to cut no more than one-third of the grass blade each time you mow.

Follow these easy watering basics to help save water and have a healthy lawn:

## ► Water 1" per week, spread over two waterings.

- Don't overwater—overwatering can invite disease and pest problems.
- Allow root zone to partially dry out between waterings, which helps inhibit weed seed germination.
- Apply water only as fast as it can enter the soil surface.
- Water deeply to encourage deep rooting and drought tolerance.
- Keep track of measurable precipitation using a rain gauge, and mark it on your calendar

## ► Water efficiently.

- Water when it is cool to avoid evaporation (early morning is best).
- Adjust water timers and routines with temperature changes—water less when it's cooler.
- Before watering, check soil for moisture at the root zone with a garden trowel, shovel or soil probe.
- Install a watering timer to prevent overwatering.
- Install a rain sensor to override your automatic sprinkler system controller during and after rain storms.

## ► Let your lawn go golden (dormant)

- If you do decide to let your lawn go dormant, make sure to water 1 inch each rainless month\*—spread over two waterings.

\* Watering 1 inch each rainless month will help ensure your lawn recovers once the rain returns.



## Give Trees a Cool Drink This Summer

Over the last two years, Stream Team volunteers have planted 1,345 native trees and shrubs at Woodland Creek Community Park! To survive our hot and dry summers, these plants require supplemental watering for at least two years after they are planted. Come to Woodland Creek Community Park and help water these young native trees and shrubs.

Volunteers will hand water plants by carrying buckets of water to each plant. It's a great way to get that bicep workout you've been looking for while helping these plants thrive! Visit [www.StreamTeam.info/getinvolved/calendar/](http://www.StreamTeam.info/getinvolved/calendar/) to find out when watering parties will take place and to register!





# Local Lakes and Beaches: Small Actions Add Up to Big Impacts!



On the surface, our local lakes, beaches and Puget Sound appears to be a watery wonderland and a source of great enjoyment, especially in the summer months! They are gems that we are proud to have throughout Thurston County, yet we are damaging them through many small actions.

There are thousands of storm drains and ditches throughout Thurston County that drain into streams, lakes and Puget Sound. While the water in our lakes and beaches may look pristine on the surface, they receive stormwater pollution carried through storm drains and drainage ditches. Stormwater pollution not only affects water quality and wildlife, but it can have an impact on human health as well.

The good news is that we can all be a part of the solution, and many small actions add up to BIG impacts. Approximately 75% of all the pollution in Puget Sound comes from stormwater runoff that starts in our neighborhoods. It comes from stormwater that runs over our yards, sidewalks, driveways and roads – picking up fertilizers, pesticides, pet waste, oil, metals, soaps, and much more along the way. By changing a few things you do in your yard and around your home, you can become a part of the solution to cleaning up and protecting our local streams, lakes, beaches and Puget Sound!

## Here are a few simple things you can do to reduce stormwater pollution from your home:

- Bag and trash pet waste: every dog, every doo, every time!
- Wash your car at a commercial car wash, or on the lawn (not above your septic drainfield or drinking well).
- Reduce the use of chemical pesticides and insecticides.
- Use a slow-release organic fertilizer on your lawns and gardens.
- Fix automotive leaks right away.

For more information about actions you can take to protect our local waters, go to: <http://www.streamteam.info/actions/>

**If you own a boat**, there are many things you can do to prevent pollution. Go to the Washington Department of Ecology's website for detailed information on preventing pollution while using and maintaining your boat: <http://www.ecy.wa.gov/programs/wq/nonpoint/CleanBoating/index.html>

## TESC FORAGE FISH BEACH SEINE .....

- Monday, July 18
- 6 – 8 p.m.
- Evergreen State College beach: Sunset Drive, (parking limited, van shuttle provided)



## TESC Forage Fish Beach Seine

*The Riches of Puget Sound:* Puget Sound is a complex estuarine ecosystem, which supports more than 200 species of fish, 100 species of marine birds, 26 kinds of marine mammals, and thousands of smaller organisms. A vital part of the health of Puget Sound is its rich food web, which is critical to all marine life residing in it. From the smallest plankton to the largest marine mammals, all organisms depend on the productivity of Puget Sound for their survival.

Join Stream Team and Washington Department of Fish and Wildlife forage fish program, for a beach seine at the Evergreen State College beach to explore a part of this critical food web. Seining for forage fish, specifically surf smelt and coastal cutthroat trout will enable WDFW to tag and track a sample of the populations. Data collected through this research effort will enable fishery biologists to increase knowledge about population dynamics and marine movement patterns of these two Puget Sound keystone species.

Participants can help pull the net to shore after which we will identify and talk about the species found in the net. To register for this workshop, visit [www.streamteam.info](http://www.streamteam.info) and click on "Register". For more information, contact Michelle at [mstevie@ci.olympia.wa.us](mailto:mstevie@ci.olympia.wa.us)

## FREE Puget Sound Starts Here App!

The **Go2Beach** app provides detailed information to help you access Puget Sound's public beaches. Using your smartphone, search beaches by location, activities (hiking, boat launch), amenities (public restrooms, ADA accessible) or beach name.

To download the free app visit **Google Play (Android version)** or **App Store (iPhone version)**.



## What About Swimming in Local Lakes and Beaches?

With all that stormwater runoff washing into local lakes, streams and Puget Sound you may be wondering if it is okay to swim in the waterfront parks and swimming holes that are open to the public in Thurston County. Thurston County Environmental Health monitors some local swimming beaches and posts swimming advisories, when necessary, on their web page.

Remember to check first before you dive in to make sure there are no swimming advisories posted: [http://www.co.thurston.wa.us/health/ehadm/swimming/swimming\\_index.html](http://www.co.thurston.wa.us/health/ehadm/swimming/swimming_index.html)

While at the swimming page for Environmental Health, you can also find out:

- Where local swimming beaches are located
- What amenities are offered at the swimming locations
- Potential risks
- Toxic blue-green algae advisories, and
- Tips for safe swimming

If you are planning on swimming or wading in a saltwater beach that is not listed on Thurston County Environmental Health's website (or it is located outside of Thurston County), go to the WA State Department of Ecology's website on Saltwater Swimming Beach Closures/Advisories at <https://fortress.wa.gov/ecy/coastalatlus/Tools/BeachClosure.aspx>

## Where are Public Swimming Beaches in Thurston County?

- Kenneydell County Park
- Long Lake Park
- Millersylvania State Park
- Tenino Quarry

## Other Public Access Beaches in Thurston County

Below are a list of other publically accessible saltwater beaches in Thurston County, which offer a variety of activities and amenities (varies by location).

- Burfoot County Park
- Evergreen State College Beach
- Frye Cove County Park
- Luhr's Landing (*Discover Pass or Vehicle Access Pass Required*)
- Priest Point Park
- Tolmie State Park (*Discover Pass Required*)
- Woodard Bay Natural Area (*Discover Pass Required*)

## Before you go to the beach....

It's a good idea to check the tides before heading to the beach. Some parks require a fee to park or to launch a boat, and some locations, such as Woodard Bay Natural Area, do not allow dogs. Some locations do not have trash cans, so bring a bag to pack out any garbage you may generate while on the trails or at the beach.

Always check the Washington State Department of Health's Shellfish Safety Information webpage before going out to harvest shellfish: <https://fortress.wa.gov/doh/eh/maps/biotoxin/biotoxin.html> Also, check with the Washington Department of Fish and Wildlife to see if you need to purchase a license to harvest shellfish.

## While at the beach...

Here are some tips to keep our beaches clean, prevent pollution, and protect wildlife while visiting beaches this summer:

- Be kind to wildlife, and don't feed wildlife.
- If you pick up a rock to examine it, carefully replace the rock to its original position. Avoid touching any animals you may find—watch and learn instead. Take only pictures. Rocks and shells are homes for wildlife. Avoid feeding birds and other animals. It may harm them and increase wildlife waste on the beach and in the water.
- Know and follow all rules and laws for the beach.
- Be careful not to trespass onto adjacent private beaches, and make sure to follow all rules and laws for the beach. When harvesting clams, always remember to fill in your holes!
- Pick up trash and pet waste.
- Waste from dirty diapers and pets can make people sick. Bag and trash all pet waste and any other waste you may generate while at the beach, including cigarette butts, which are harmful to wildlife.
- Swim only when healthy. Swimmers should stay out of the water when they are ill, especially when feverish or having diarrhea.
- Help children keep the water clean. Take children for frequent bathroom breaks. Change diapers frequently.
- Keep pets under control.
- Pets can scare or harm wildlife. Pet waste can pollute beaches and make people sick. Keeping pets under control helps make everyone's visit to the beach more pleasant.



**There is a permanent  
SWIMMING ADVISORY  
at Priest Point Park  
due to the nearby  
sewage treatment  
outfall and  
marina.**



## Featured Creature

### European Green Crab (*Carcinus maenas*)

#### Native Range

Atlantic coasts of Europe, northern Africa.

#### Description

Carapace (top of shell) mottled dark brown to green with small yellow patches. The underside may be green-orange and red during the molting season. Carapace width is 2.5 – 4 inches (6 – 10 cm). Identifying characteristics: European green crabs have 5 spines on either side of their eyes at the front of the carapace. The 3 rounded lobes (bumps) between its eyes may also be used to help identify this crab. The claws are equal in size and the last pair of hind walking legs are relatively flat with little to no hairs on the carapace or claws. The most commonly misidentified native crab species is the helmet crab (*Telmessus cheiragonus*). The helmet crab's entire body is covered with stiff hair. It has six spines on either side of the eyes, and a pair of long, bristly antennae.

#### Invasion and Observations

The European green crab's tolerance of a wide variety of environmental conditions has enabled it to invade coastal communities outside its native range, including both coasts of North America. In Washington, they have been found exclusively in tidal-salt marshes. They have not been observed on rocky shores or cobble beaches. Species and habitat impacted by European green crab include: shellfish beds, eel grass, Dungeness and other native crabs.

#### Prevention

In 1998, Washington State completed the Aquatic Nuisance Species Management Plan of the National Invasive Species Act of 1996. The primary goal of the plan is to prevent future aquatic nuisance species introductions. European green crabs have become popular in scientific study resulting in easy accessibility from biological supply companies. Non-native live crabs may not be imported into Washington without first obtaining written permission from the director of WDFW (WAC 232-12-01701). Under no circumstances should these crabs or their progeny be released to local marine waters.

## European Green Crab (*Carcinus maenas*)

### Another Threat to Washington's Shores

The European green crab (*Carcinus maenas*), is considered one of the world's worst invasive species, and is poised to enter Washington's inland shoreline ecosystems. Washington Sea Grant, Washington Department of Fish & Wildlife, and partners at the University of Washington have joined to launch the Crab Team, a volunteer-based early detection and monitoring program.

Due to strong, warm ocean currents the European green crab has invaded the coastline of Oregon, Washington and Vancouver Island. In 2012, a population of green crabs was discovered in Sooke Inlet, west of Victoria. Favorable conditions mean that the robust population of green crabs in Sooke could send the floating larvae further south into Puget Sound.

Biologists and trained volunteers are monitoring beaches for the early detection of green crab. If we find green crab early enough, we may be able to prevent them from spreading throughout Puget Sound.

**How can you help?** Everyone can help in the effort to spot European green crabs. On your next beach walk, pay close attention to the crab shells you find washed up on the beach. Most invasions are detected from the shed crab shells rather than live individuals. The best way to identify European green crabs is their 5 spines near the outside of each eye. Color is not an accurate way to identify the crab as its color varies and can be mistaken for several of our native "green" colored crab species. To learn more about the threat of invasion, how to identify green crabs and a link to the reporting form, visit the Crab Team website: [www.wsg.washington.edu/crabteam](http://www.wsg.washington.edu/crabteam) or attend the upcoming talk.

**Note the 5 jagged spines (marginal teeth) to the outside of each eye.** This feature is distinct among crabs. Dungeness crabs have 10 spines and native shore crabs have 3.

### Help Prevent the Spread of Invasive Species

Do not relocate or move these crabs, or any other species, from where they are found. Clean all bilge, bait wells and fishing gear before moving to new locations.

Article by Emily Grason, Ph.D. Candidate, Department of Biology, University of Washington

## Invasivore Dining!

Eat those invasives! From delectable European green crabs, lion fish or garlic mustard, a creative way to control these nuisance non-native invasive species is to eat them!

For more information go to [www.invasivore.org](http://www.invasivore.org)

## GREEN CRAB SCIENCE CAFÉ AWARENESS TALK

- Tuesday, June 14
- 7 – 8 p.m.
- Orca Books, 509 4th Ave E., Olympia

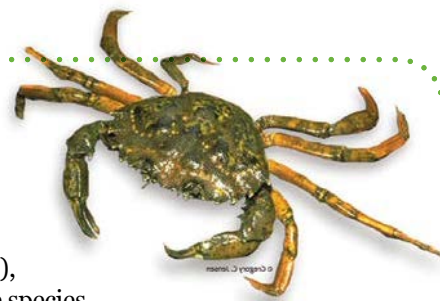
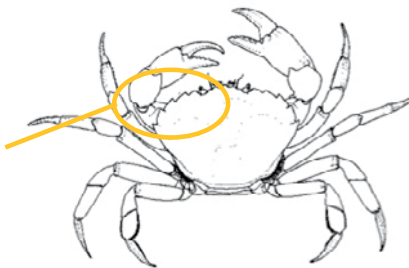


PHOTO CREDIT: GREG JENSEN





# Conserving Water Conserves Your Cash!

The clouds have finally cleared, the sun is shining, and the nostalgic smell of backyard barbecues fill the air. Yes, it's summer time once again! There's a lot to remember during this time of year: how often to apply sunscreen, where this year's family vacation will be, and which exciting Stream Team events to attend—just to name a few.

During the hustle and bustle of summer time, it can be easy to forget about water use. With rising temperatures comes an increase in water use, (almost three times higher in summer compared to winter) and a need for conservation. Here are some quick and easy tips for conserving water, both indoors and outdoors:

## Save Water & Save Green!

Utility Provider	Who is Eligible?	Incentives & Rebates
<b>LOTT Clean Water Alliance</b>	LOTT Clean Water Alliance Sewer Customer (Lacey, Olympia, Tumwater, Unincorporated Thurston County)	<p>\$➤ \$50 rebate for Energy Star certified washing machine</p> <p>\$➤ Up to \$100 for a water-efficient toilet</p> <p>\$➤ For more info., go to <a href="http://www.lottcleanwater.org/rebates.htm">http://www.lottcleanwater.org/rebates.htm</a></p>
<b>Lacey, Olympia &amp; Tumwater</b>	Water Customers with On-Site Septic Systems	<p>\$➤ High efficiency toilets and/or washing machines</p> <p>\$➤ Lacey: Contact <a href="mailto:waterresources@ci.lacey.wa.us">waterresources@ci.lacey.wa.us</a> or 360-438-2687</p> <p>\$➤ Olympia: Contact Erin Conine at 360-753-8271</p> <p>\$➤ Tumwater: Contact Amy Georgeson at 360-754-4140</p>
<b>Olympia &amp; Tumwater</b>	Water Customers	\$➤ Rain barrel rebates (max. amount and number varies by jurisdiction)
<b>Lacey, Olympia &amp; Tumwater</b>	Water Customers	<p>\$➤ Outdoor Water Saving Kits,</p> <p>\$➤ Indoor Water Saving Kit, and/or "Smart" irrigation controller rebates up to \$200</p>
<b>Puget Sound Electric</b>	Current PSE Residential Electric or Natural Gas Customer	<p>\$➤ Instant discounts up to \$10 off WaterSense® showerheads, faucets, and faucet aerators at some local hardware stores.</p> <p>\$➤ Look for the PSE logo on the items listed above to find instant discounts.</p> <p>\$➤ For more info, go to <a href="https://pse.com/savingsandenergycenter/Rebates/Pages/Water-savings.aspx">https://pse.com/savingsandenergycenter/Rebates/Pages/Water-savings.aspx</a></p>

For more information about indoor or outdoor water conservation programs listed above that are offered by the Cities of Lacey, Olympia or Tumwater go to:

Lacey: [www.ci.lacey.wa.us/water-conservation](http://www.ci.lacey.wa.us/water-conservation)

Olympia: <http://olympiawa.gov/city-utilities/drinking-water/conservation.aspx>

Tumwater: <http://www.ci.tumwater.wa.us/departments/public-works/utilities/water-conservation>



## Indoors.....

- ☒ Consider using an Energy Star dishwasher over washing dishes by hand. Remember to run dishwashers only when they are full.
- ☒ Monitor your water bill for unusually high use—it could mean! Check all faucets, showers, tubs, and toilets.
- ☒ Try the water meter test to check for leaks: First, make sure all indoor and outdoor water is shut off, then record the reading of your water meter. Wait 15 minutes, and take a second reading of your meter. If the reading has changed, you might have a leak!
- ☒ Don't use running water to thaw food. Defrost it in the refrigerator.
- ☒ If your shower fills a one-gallon bucket in less than 20 seconds, replace with a low-flow shower head.
- ☒ Turn off the water while you brush your teeth or shave, and save up to 4 gallons a minute.



## Outdoors.....

- ☒ Check to see if your water provider has an outdoor watering schedule.
- ☒ Be a leak detective! Check all irrigation systems, garden hoses/nozzles and water features for leaks.
- ☒ Pick the right outdoor plants! Choose plants that are native to Western Washington or are water wise.
- ☒ Install drip irrigation in any planting beds that require irrigation.
- ☒ Mulch your plants. It helps to retain soil moisture and block thirsty weeds.
- ☒ Use hose nozzles to control the flow of water through your hoses.
- ☒ Adjust sprinklers and hoses so that driveways, sidewalks and streets don't get watered.
- ☒ Wash your pets outdoors, in an area of your lawn that needs water.

# Featured Waterbody

## Deep Lake



## Not so "Deep" Lake

There are at least eight Deep Lakes in Washington State, from Skamania County to Jefferson County. Thurston County's Deep Lake is called "deep" despite the fact that its maximum depth is only 17 feet! With 3,300 feet of freshwater shoreline, Deep Lake, which is located in Millersylvania State Park, is a popular lake for boating, fishing, picnicking and swimming.

As one of only four officially designated outdoor swimming areas in Thurston County, many locals seek relief from summer heat at one of its two roped-off swimming areas. Since 2007, invasive Eurasian milfoil has been found in Deep Lake by Thurston County Noxious Weeds and Lakes Management program. Milfoil can impact the quality of swimming conditions. During 2014, milfoil was removed by divers. Annual surveys are ongoing and, so far, reveal no additional milfoil.

Deep Lake also features a 100-foot fishing dock and a hand-type boat launch for non-motorized or small powered boats, as there is a 5 mile per hour speed limit. During the high summer season, kayaks and pedal-boat rentals are available. Since Deep Lake is located within a state park, a Discover Pass is required. For information about purchasing a pass, go to: [www.discoverpass.wa.gov](http://www.discoverpass.wa.gov)

For more information on Deep Lake and Millersylvania State Park go to <http://parks.state.wa.us/546/Millersylvania>

# Kids' CORNER

Unscramble each of the clue words. Take the letters that appear in ☐ boxes and unscramble them for the final message.



## All Scrambled Up!

HCEAB

☐ ☐ ☐ ☐ ☐ ☐

TAWRE

☐ ☐ ☐ ☐ ☐ ☐

VECRESNO

☐ ☐ ☐ ☐ ☐ ☐ ☐ ☐

NADROLFYG

☐ ☐ ☐ ☐ ☐ ☐ ☐ ☐ ☐

MARNIE

☐ ☐ ☐ ☐ ☐ ☐

SYNUN

☐ ☐ ☐ ☐ ☐ ☐

GEENR CARB

☐ ☐ ☐ ☐ ☐ ☐ ☐ ☐ ☐ ☐

MWSIMIGN

☐ ☐ ☐ ☐ ☐ ☐ ☐ ☐

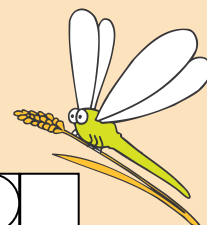
EPDE LAEK

☐ ☐ ☐ ☐ ☐ ☐ ☐ ☐ ☐

XIF KAELS

☐ ☐ ☐ ☐ ☐ ☐ ☐ ☐ ☐

ROOTUDOS

☐ ☐ ☐ ☐ ☐ ☐ ☐ ☐


FINAL MESSAGE

☐ ☐ ☐ ☐
☐ ☐ ☐ ☐
☐ ☐ ☐ ☐ ☐ ☐

ANSWERS: BEACH, WATER, CONSERVE, DRAGONFLY, MARINE, SUNNY, GREEN CRAB, SWIMMING, DEEP LAKE, FIX LEAKS, OUTDOORS, FINAL MESSAGE: LOVE YOUR STREAM.

CREDIT: PUZZLEMAKER AT DISCOVERYEDUCATION.COM





# Stream Team *Events*

For additional events, event details or to register, please visit our website and click on "Calendar" or "Register": [www.streamteam.info](http://www.streamteam.info)

For maps and directions to any of these events, go to: [streamteam.info/getinvolved/directions/](http://streamteam.info/getinvolved/directions/)

## JUNE

### Bat Talk

**Fri., June 3 • 7 p.m.**

Traditions Café and World Folk Art  
300 5th Ave SW, Olympia

See page 4 for details. Registration required!  
Register online.

### Bat Walk

**Fri., June 3 • 9 p.m.**

Heritage Park on Capitol Lake,  
across from Traditions Café, Olympia

See page 4 for details. Registration NOT  
required.

### Green Crab Science Café Awareness Talk

**Tues., June 14 • 7 – 9 p.m.**

Orca Books, 509 4th Ave E., Olympia

See page 8 for details. Register online.

### Stream Bug Monitoring Training

**Tues., June 21 • 6 – 8 p.m.**

McLane Creek Nature Trail, Delphi Road

*Discover Pass Required*

See page 4 for details. Register online.

### Stream Bug Monitoring Dates

**Tues., June 28 • 1 – 3 p.m. • Indian Creek**

**Tues., July 5 • 1 – 3 p.m. • Mission Creek**

**Wed., July 27 • 1 – 3 p.m. • Ellis Creek**

**Sat., Aug. 6 • 10 a.m. – 3 p.m. • Percival Creek**

See page 4 for training details. Register online.

### What's Blooming in Budd? Citizen Plankton Monitoring

**PLANKTON TOW:**

**Thursdays, June 23 – Sept. 22 • 2 – 2:45 p.m.**  
Port Plaza Dock

**PLANKTON OBSERVATION:**

**Thursdays, June 23 – Sept. 22 • 3 – 4 p.m.**

LOTT WET Science Center

Help gather plankton samples from Port  
Plaza Dock and/or observe live samples on  
the big screen at LOTT WET Center.

No registration necessary.

## JULY

### Tumwater 4th of July Festival

**Mon., July 4 • 6 – 10 p.m.** • Tumwater Valley Golf Course

Volunteer for a shift at the Stream Team booth and receive a FREE Stream Team t-shirt.

Register online.

### The Life of Dragonflies with Dennis Paulson

**LECTURE: Sat. July 9 • 10 – 11:30 a.m.**

LOTT WET Science Center, 500 Adams St NE, Olympia

**FIELD TRIP:** To follow at a local wetland

Join Stream Team and Dr. Dennis Paulson for a fascinating talk and field trip covering the life  
of dragonflies. This is a workshop you will not want to miss! See page 2 for details.

Field trip space is limited to first 40 registrations. Register online.

### Salmon Stewards Basic & Field Trainings

**Several Dates in July, August & September**

See page 3 for details. Register online.

### Marine Creature Mondays

**Mon., July 18 or 25 • Two sessions: 11:30 a.m. OR 1 p.m.**

See page 12 for details. Registration Required. Please only  
sign up for one session; space is limited. Register online.

### Evergreen College Beach Seine

**Mon., July 18 • 6 – 8 p.m.**

The Evergreen State College beach, Sunset Drive

See page 6 for details. Register online.

## AUGUST

### Marine Creature Mondays

**Mon., Aug. 1, 8, 15 or 22 • Two sessions:**

**11:30 a.m. OR 1 p.m.**

See page 12 for details. Registration

Required. Please only sign up for one session,  
space is limited. Register online.

### EARN YOUR FREE "P.S. I LOVE YOU" BAG

by participating in Stream Team events!



Look for the "P.S. I Love You"  
stamp next to the events in our  
calendar for qualifying events.



### To Register a Group

go to: [http://streamteam.info/getinvolved/  
calendar/register-steps.php](http://streamteam.info/getinvolved/calendar/register-steps.php)



Check online at [www.streamteam.info/  
getinvolved/calendar/](http://www.streamteam.info/getinvolved/calendar/) for up-to-date events,  
including additional tree planting events.

### HOW TO REGISTER FOR EVENTS

Visit: [www.streamteam.info](http://www.streamteam.info)  
and click on "Register"

Select the event for which you plan to register

Click on the register button near the bottom  
of the "Event Detail"

Follow the instructions to log in as an existing  
volunteer or create a new secure profile



# Stream Team

EDUCATE • PROTECT • RESTORE  
Olympia • Lacey • Tumwater • Thurston County

2000 Lakeridge Dr SW  
Bldg 4 #100  
Olympia, WA 98502  
[www.streamteam.info](http://www.streamteam.info)



## MARINE CREATURE MONDAYS .....

- **JULY:**  
Monday, July 18  
or July 25
- **AUGUST:**  
Monday, Aug. 1, Aug. 8,  
Aug. 15 or Aug. 22
- **TWO SESSIONS:**  
11:30 a.m. or 1 p.m.
- **Registration Required.**  
Please only sign up for one  
session. Space is limited.



## Marine Creature Mondays

From kelp crabs to sea worms, Puget Sound is home to many amazing critters! Join us as Stream Team pairs with local divers for hands-on viewing of some of the wonders of Puget Sound's marine life. Divers will demonstrate their equipment prior to diving to the bottom of the Sound and collecting marine creatures for up close viewing. Biologists will talk about the different species found, their habitat needs, and what is required to keep Puget Sound healthy. Marine creatures are kept in sea water for viewing, then released back to Puget Sound.

## How does Thurston County's stormwater affect the marine life of Puget Sound?

The water quality of our streams and Puget Sound is impacted by stormwater that flows into storm drains. Stormwater runoff picks up pollutants as it runs over our yards, driveways and roads. Even if your storm drain is not on or near the shore it can carry polluted runoff into local streams and into Puget Sound, where it can reduce oxygen levels and cause other impacts to marine animals that call Puget Sound home. Visit [www.streamteam.info/actions/](http://www.streamteam.info/actions/) to find out how you can prevent stormwater pollution and protect the home of marine creatures that live in Puget Sound.