

BEST PRACTICES

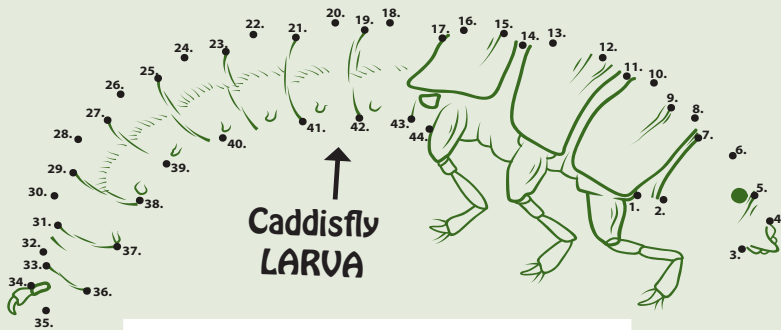
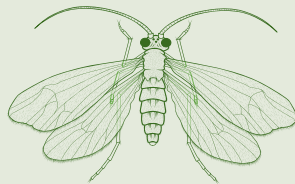


Kids' Corner

Benthic MacroInvertebrates: Connect the Dots!

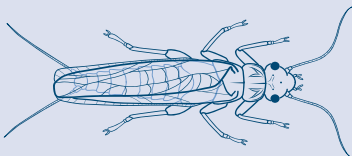
Caddisfly larvae live in the bottom of streams, often making their own houses out of very small rocks or twigs in the shape of a tube around their bodies. They pupate in their rock or twig tube and emerge from the water as a caddisfly adult that looks a lot like a butterfly or moth.

Caddisfly
ADULT

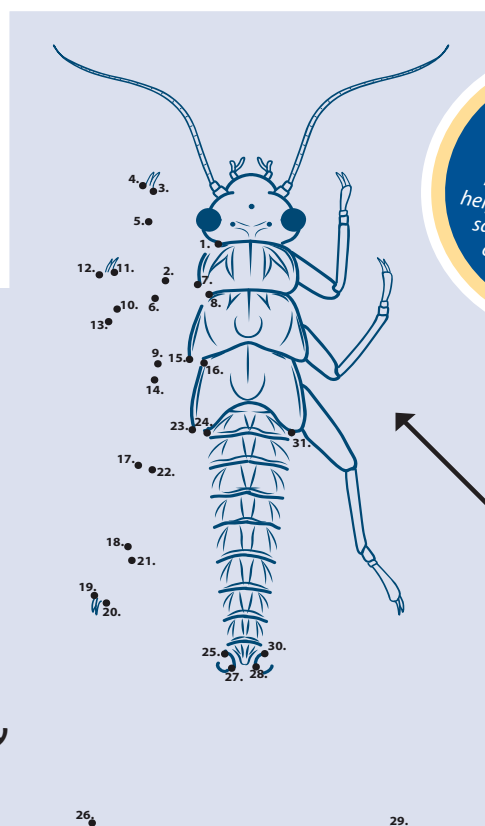


Caddisfly
LARVA

Stonefly nymphs are predators on the bottom of streams. If you have them in your stream, it means that there is probably a healthy food web of herbivores for them to eat. They eventually grow 4 wings off of their thorax, and fly out of the water to live for a short time as a stonefly adult.



Stonefly
ADULT



Stonefly
NYMPH

**LEARN
MORE**
about Benthic
Macroinvertebrates by
helping collect Stream Bug
samples from our local
creeks this summer!

Illustrations courtesy of our very own AmeriCorps volunteer, Anne Schuster. Source: Stream Team News, Summer 2013